

Big Bang Model

This model is the simplest model in its form. It requires little planning, lots of programming and lots of funds. This model is conceptualized around the big bang of universe. As scientists say that after big bang lots of galaxies, planets and stars evolved just as an event. Likewise, if we put together lots of programming and funds, you may achieve the best software product.



For this model, very small amount of planning is required. It does not follow any process, or at times the customer is not sure about the requirements and future needs. So the input requirements are arbitrary.

This model is not suitable for large software projects but good one for learning and experimentin

Chapter Three

Software Project Management

The job pattern of an IT company engaged in software development can be seen split in two parts:

- Software Creation
- Software Project Management

A project is well-defined task, which is a collection of several operations done in order to achieve a goal (for example, software development and delivery). A Project can be characterized as:

- Every project may has a unique and distinct goal.
- Project is not routine activity or day-to-day operations.
- Project comes with a start time and end time.
- Project ends when its goal is achieved hence it is a temporary phase in the lifetime of an organization.
- Project needs adequate resources in terms of time, manpower, finance, material and knowledge-bank.

Software Project

A Software Project is the complete procedure of software development from requirement gathering to testing and maintenance, carried out according to the execution methodologies, in a specified period of time to achieve intended software product.

Need of software project management

Software is said to be an intangible product. Software development is a kind of all new stream in world business and there's very little experience in building software products. Most software products are tailor made to fit client's requirements. The most important is that the underlying technology changes and advances so frequently and rapidly that experience of one product may not be applied to the other one. All such business and environmental constraints bring risk in software development hence it is essential to manage software projects efficiently.



The image above shows triple constraints for software projects. It is an essential part of software organization to deliver quality product, keeping the cost within client's budget constrain and deliver the project as per scheduled. There are several

factors, both internal and external, which may impact this triple constrain triangle. Any of three factor can severely impact the other two.

Therefore, software project management is essential to incorporate user requirements along with budget and time constraints.

Software Project Manager

A software project manager is a person who undertakes the responsibility of executing the software project. Software project manager is thoroughly aware of all the phases of SDLC that the software would go through. Project manager may never directly involve in producing the end product but he controls and manages the activities involved in production.

A project manager closely monitors the development process, prepares and executes various plans, arranges necessary and adequate resources, maintains communication among all team members in order to address issues of cost, budget, resources, time, quality and customer satisfaction.

Let us see few responsibilities that a project manager shoulders -

Managing People

- Act as project leader
- Liaison with stakeholders
- Managing human resources
- Setting up reporting hierarchy etc.

Managing Project

- Defining and setting up project scope
- Managing project management activities
- Monitoring progress and performance
- Risk analysis at every phase
- Take necessary step to avoid or come out of problems
- Act as project spokesperson

Software Management Activities

Software project management comprises of a number of activities, which contains planning of project, deciding scope of software product, estimation of cost in various terms, scheduling of tasks and events, and resource management. Project management activities may include:

- **Project Planning**
- **Scope Management**
- **Project Estimation**

Project Planning

Software project planning is task, which is performed before the production of software actually starts. It is there for the software production but involves no concrete activity that has any direction connection with software production; rather it is a set of multiple processes, which facilitates software production. Project planning may include the following:

Scope Management

It defines the scope of project; this includes all the activities, process need to be done in order to make a deliverable software product. Scope management is essential because it creates boundaries of the project by clearly defining what would be done in the project and what would not be done. This makes project to contain limited and quantifiable tasks, which can easily be documented and in turn avoids cost and time overrun.

During Project Scope management, it is necessary to -

- Define the scope
- Decide its verification and control
- Divide the project into various smaller parts for ease of management.
- Verify the scope
- Control the scope by incorporating changes to the scope

Project Estimation

For an effective management accurate estimation of various measures is a must. With correct estimation managers can manage and control the project more efficiently and effectively.

Project estimation may involve the following:

- **Software size estimation**

Software size may be estimated either in terms of KLOC (Kilo Line of Code) or by calculating number of function points in the software. Lines of code depend upon coding practices and Function points vary according to the user or software requirement.

- **Effort estimation**

The managers estimate efforts in terms of personnel requirement and man-hour required to produce the software. For effort estimation software size should be known. This can either be derived by managers' experience, organization's historical data or software size can be converted into efforts by using some standard formulae.

- **Time estimation**

Once size and efforts are estimated, the time required to produce the software can be estimated. Efforts required is segregated into sub categories as per the requirement specifications and interdependency of various components of software. Software tasks are divided into smaller tasks, activities or events by Work Breakthrough Structure (WBS). The tasks are scheduled on day-to-day basis or in calendar months.

The sum of time required to complete all tasks in hours or days is the total time invested to complete the project.

- **Cost estimation**

This might be considered as the most difficult of all because it depends on more elements than any of the previous ones. For estimating project cost, it is required to consider -

- Size of software
- Software quality
- Hardware
- Additional software or tools, licenses etc.
- Skilled personnel with task-specific skills
- Travel involved
- Communication
- Training and support

Project Estimation Techniques

We discussed various parameters involving project estimation such as size, effort, time and cost.

Project manager can estimate the listed factors using two broadly recognized techniques –

Decomposition Technique

This technique assumes the software as a product of various compositions.

There are two main models -

- **Line of Code** Estimation is done on behalf of number of line of codes in the software product.
- **Function Points** Estimation is done on behalf of number of function points in the software product.

Empirical Estimation Technique

This technique uses empirically derived formulae to make estimation. These formulae are based on LOC or FPs.

- **Putnam Model**

This model is made by Lawrence H. Putnam, which is based on Norden's frequency distribution (Rayleigh curve). Putnam model maps time and efforts required with software size.

- **COCOMO**

COCOMO stands for COConstructive COst MOdel, developed by Barry W. Boehm. It divides the software product into three categories of software: organic, semi-detached and embedded.

Project Scheduling

Project Scheduling in a project refers to roadmap of all activities to be done with specified order and within time slot allotted to each activity. Project managers tend to define various tasks, and project milestones and then arrange them keeping various factors in mind. They look for tasks lie in critical path in the schedule, which are necessary to complete in specific manner (because of task interdependency) and strictly within the time allocated. Arrangement of tasks which lies out of critical path are less likely to impact over all schedule of the project.

For scheduling a project, it is necessary to -

- Break down the project tasks into smaller, manageable form
- Find out various tasks and correlate them
- Estimate time frame required for each task
- Divide time into work-units
- Assign adequate number of work-units for each task
- Calculate total time required for the project from start to finish

Resource management

All elements used to develop a software product may be assumed as resource for that project. This may include human resource, productive tools and software libraries.

The resources are available in limited quantity and stay in the organization as a pool of assets. The shortage of resources hampers the development of project and it can lag behind the schedule. Allocating extra resources increases development cost in the end. It is therefore necessary to estimate and allocate adequate resources for the project.

Resource management includes -

- Defining proper organization project by creating a project team and allocating responsibilities to each team member
- Determining resources required at a particular stage and their availability
- Manage Resources by generating resource request when they are required and de-allocating them when they are no more needed.

Project Risk Management

Risk management involves all activities pertaining to identification, analyzing and making provision for predictable and non-predictable risks in the project. Risk may include the following:

- Experienced staff leaving the project and new staff coming in.
- Change in organizational management.
- Requirement change or misinterpreting requirement.
- Under-estimation of required time and resources.
- Technological changes, environmental changes, business competition.

Risk Management Process

There are following activities involved in risk management process:

- **Identification** - Make note of all possible risks, which may occur in the project.
- **Categorize** - Categorize known risks into high, medium and low risk intensity as per their possible impact on the project.
- **Manage** - Analyze the probability of occurrence of risks at various phases. Make plan to avoid or face risks. Attempt to minimize their side-effects.
- **Monitor** - Closely monitor the potential risks and their early symptoms. Also monitor the effects of steps taken to mitigate or avoid them.

Project Execution & Monitoring

In this phase, the tasks described in project plans are executed according to their schedules.

Execution needs monitoring in order to check whether everything is going according to the plan. Monitoring is observing to check the probability of risk and taking measures to address the risk or report the status of various tasks.

These measures include -

- **Activity Monitoring** - All activities scheduled within some task can be monitored on day-to-day basis. When all activities in a task are completed, it is considered as complete.
- **Status Reports** - The reports contain status of activities and tasks completed within a given time frame, generally a week. Status can be marked as finished, pending or work-in-progress etc.
- **Milestones Checklist** - Every project is divided into multiple phases where major tasks are performed (milestones) based on the phases of SDLC. This milestone checklist is prepared once every few weeks and reports the status of milestones.

Project Communication Management

Effective communication plays vital role in the success of a project. It bridges gaps between client and the organization, among the team members as well as other stake holders in the project such as hardware suppliers.

Communication can be oral or written. Communication management process may have the following steps:

- **Planning** - This step includes the identifications of all the stakeholders in the project and the mode of communication among them. It also considers if any additional communication facilities are required.
- **Sharing** - After determining various aspects of planning, manager focuses on sharing correct information with the correct person on correct time. This keeps every one involved the project up to date with project progress and its status.
- **Feedback** - Project managers use various measures and feedback mechanism and create status and performance reports. This mechanism ensures that input from various stakeholders is coming to the project manager as their feedback.
- **Closure** - At the end of each major event, end of a phase of SDLC or end of the project itself, administrative closure is formally announced to update every stakeholder by sending email, by distributing a hardcopy of document or by other mean of effective communication.

After closure, the team moves to next phase or project.

Configuration Management

Configuration management is a process of tracking and controlling the changes in software in terms of the requirements, design, functions and development of the product.

IEEE defines it as “the process of identifying and defining the items in the system, controlling the change of these items throughout their life cycle, recording and reporting the status of items and change requests, and verifying the completeness and correctness of items”.

Generally, once the SRS is finalized there is less chance of requirement of changes from user. If they occur, the changes are addressed only with prior approval of higher management, as there is a possibility of cost and time overrun.

Baseline

A phase of SDLC is assumed over if it baselined, i.e. baseline is a measurement that defines completeness of a phase. A phase is baselined when all activities pertaining to it are finished and well documented. If it was not the final phase, its output would be used in next immediate phase.

Configuration management is a discipline of organization administration, which takes care of occurrence of any change (process, requirement, technological, strategical etc.) after a phase is baselined. CM keeps check on any changes done in software.

Change Control

Change control is function of configuration management, which ensures that all changes made to software system are consistent and made as per organizational rules and regulations.

A change in the configuration of product goes through following steps -

- **Identification** - A change request arrives from either internal or external source. When change request is identified formally, it is properly documented.
- **Validation** - Validity of the change request is checked and its handling procedure is confirmed.

- **Analysis** - The impact of change request is analyzed in terms of schedule, cost and required efforts. Overall impact of the prospective change on system is analyzed.
- **Control** - If the prospective change either impacts too many entities in the system or it is unavoidable, it is mandatory to take approval of high authorities before change is incorporated into the system. It is decided if the change is worth incorporation or not. If it is not, change request is refused formally.
- **Execution** - If the previous phase determines to execute the change request, this phase take appropriate actions to execute the change, does a thorough revision if necessary.
- **Close request** - The change is verified for correct implementation and merging with the rest of the system. This newly incorporated change in the software is documented properly and the request is formally is closed.

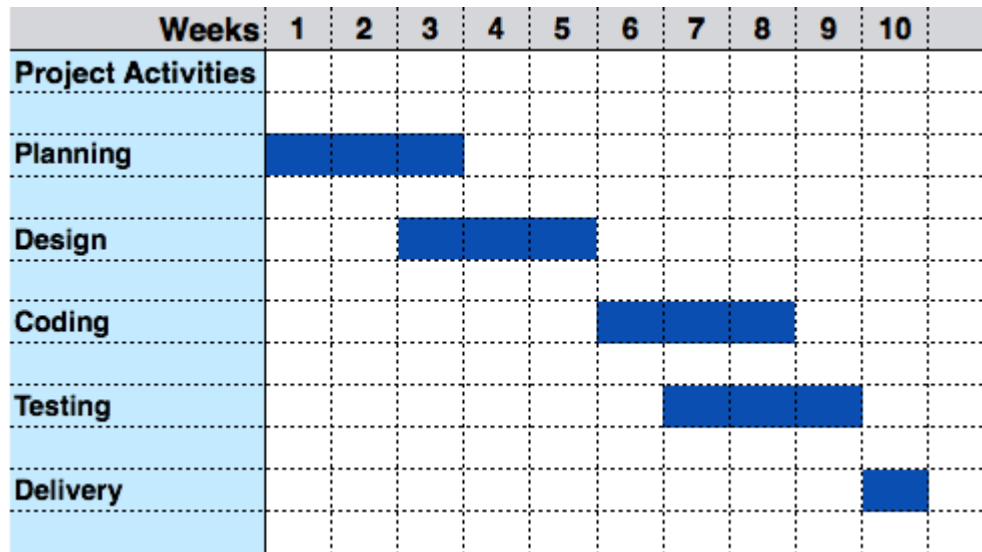
Project Management Tools

The risk and uncertainty rises multifold with respect to the size of the project, even when the project is developed according to set methodologies.

There are tools available, which aid for effective project management. A few are described -

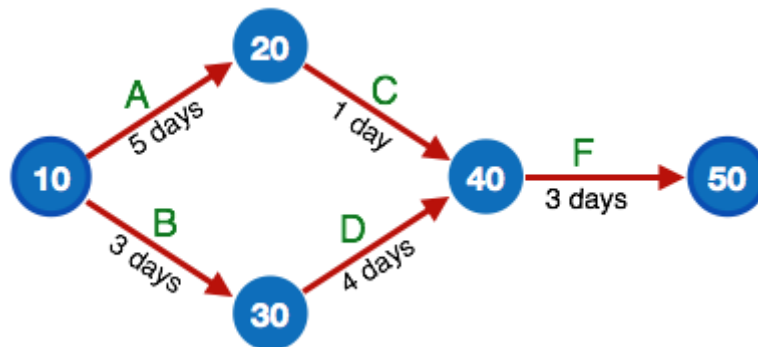
Gantt Chart

Gantt charts was devised by Henry Gantt (1917). It represents project schedule with respect to time periods. It is a horizontal bar chart with bars representing activities and time scheduled for the project activities.



PERT Chart

PERT (Program Evaluation & Review Technique) chart is a tool that depicts project as network diagram. It is capable of graphically representing main events of project in both parallel and consecutive way. Events, which occur one after another, show dependency of the later event over the previous one.

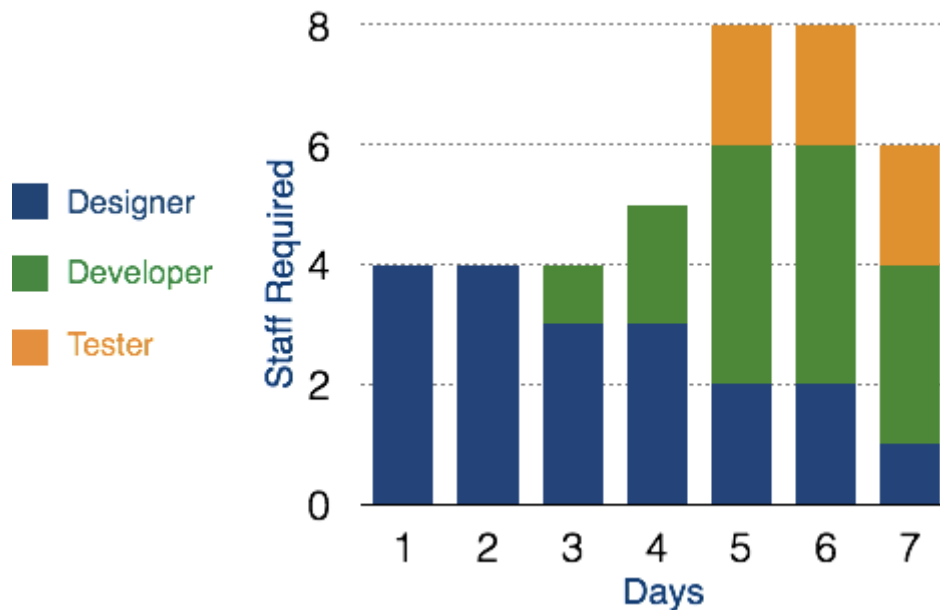


Events are shown as numbered nodes. They are connected by labeled arrows depicting sequence of tasks in the project.

Resource Histogram

This is a graphical tool that contains bar or chart representing number of resources (usually skilled staff) required over time for a project event (or phase). Resource Histogram is an effective tool for staff planning and coordination.

Staff	Day 1	Day 2	Day 3	Day 4	Day 5	Day 6	Day 7
Designer	4	4	3	3	2	2	1
Developer	0	0	1	2	4	4	3
Tester	0	0	0	0	2	2	2
Total	4	4	4	5	8	8	6



Critical Path Analysis

This tool is useful in recognizing interdependent tasks in the project. It also helps to find out the shortest path or critical path to complete the project successfully. Like PERT diagram, each event is allotted a specific time frame. This tool shows dependency of event assuming an event can proceed to next only if the previous one is completed.

The events are arranged according to their earliest possible start time. Path between start and end node is critical path which cannot be further reduced and all events require to be executed in same order.