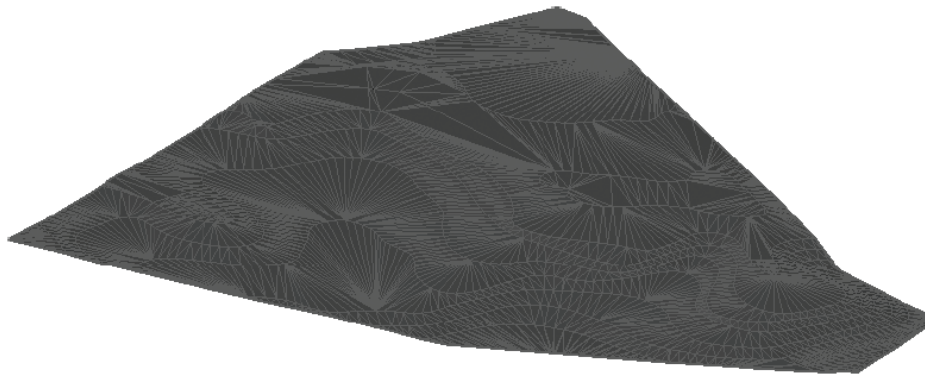


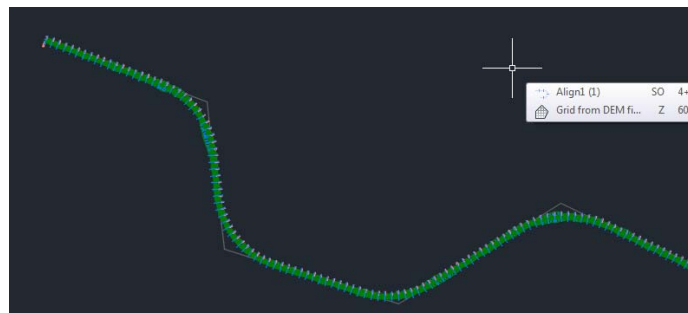
2.1 Objects and styles

A Civil 3D *object* is an intelligent piece of your design model that stores information about itself and has the ability to interact with other objects in the drawing. A Civil 3D *style* is a collection of settings that control the appearance and behavior of a Civil 3D object. The most commonly used objects are:

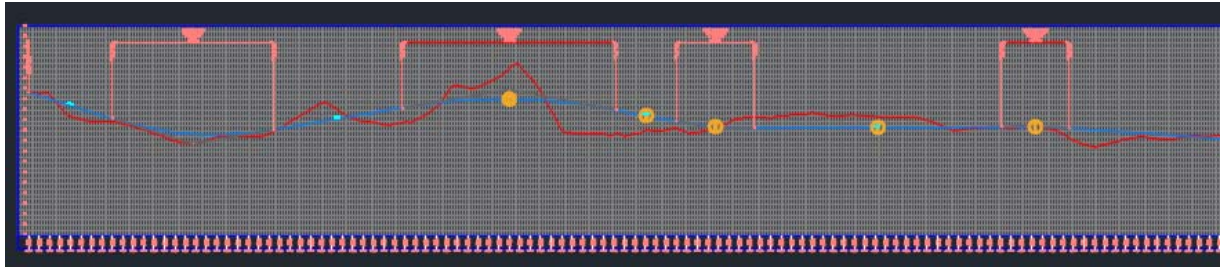
Surface A 3D model typically used to represent the shape of the ground, either existing or proposed



Alignment A series of 2D lines, arcs, and spirals typically used to represent a linear feature such as a road centerline

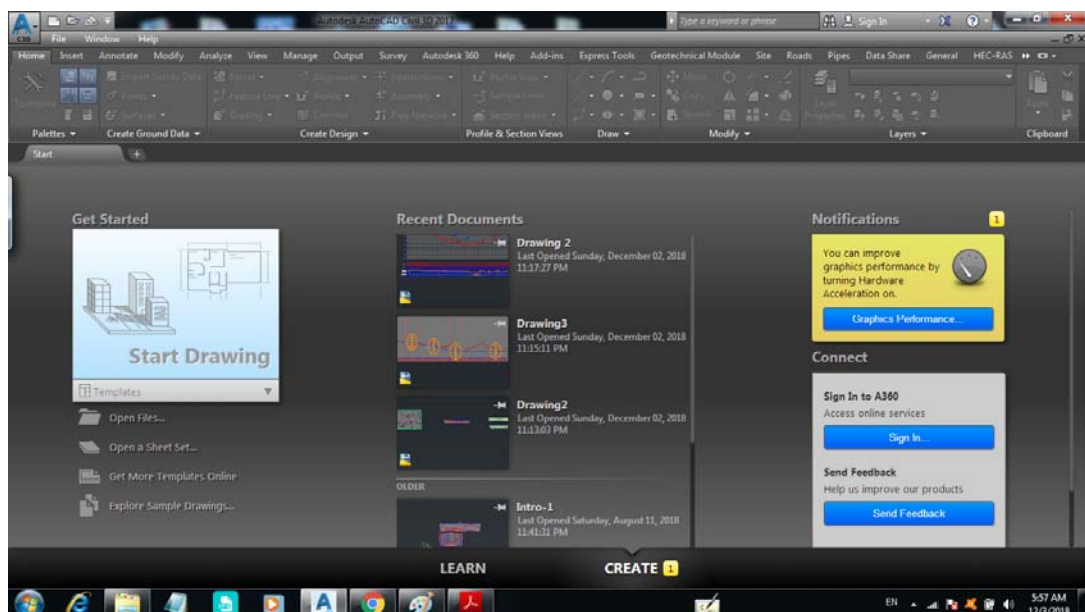


Profile A series of lines and curves that represent changes in elevation along an alignment



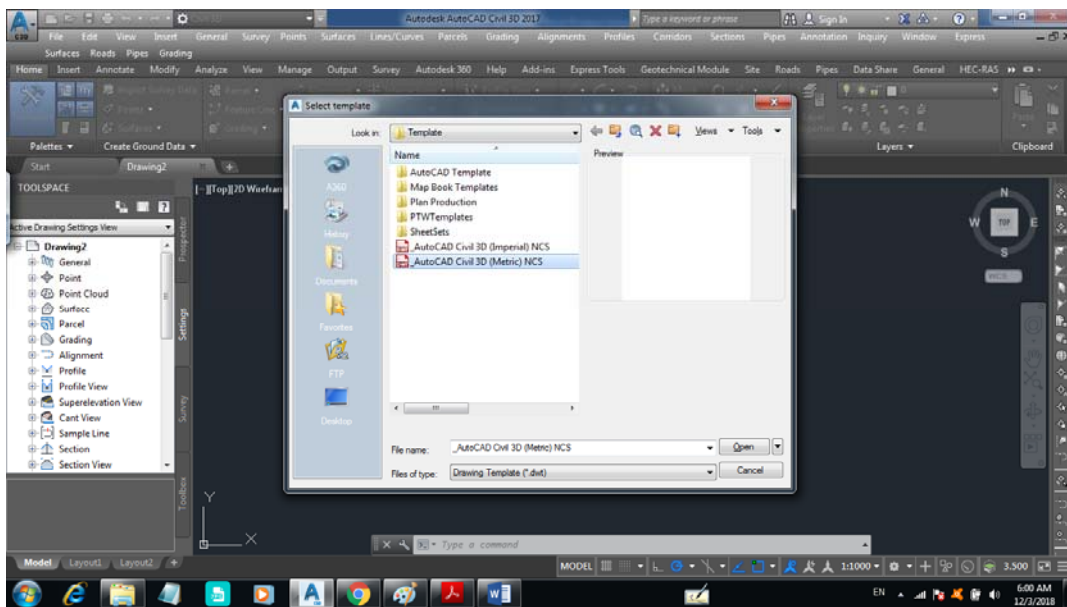
2.2 How to create a new project?

1. Click on AutoCAD Civil 3D 2017 icon on the desktop as shown below and then select start drawing. From this window you are able also to open a previous project which was worked recently.



2. If you the software was open and you want to open a new project, from file menu choose new then select AutoCAD Civil 3D (Metric) NCS as shown in figure below. Then press open

File-----new-----AutoCAD Civil3D (Metric) NCS-----open



2.3 How to save a new project?

From file menu, choose save as and then select the location (or path) in which you want to save your project

File-----Save as-----specify the path or location in which you want to save your project