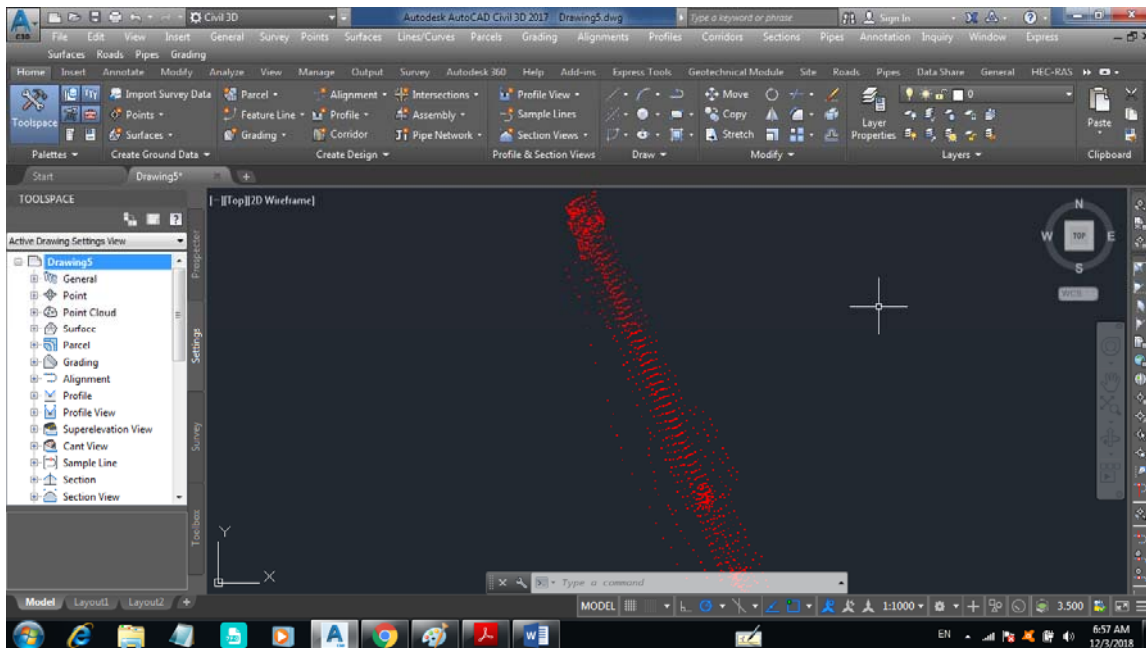


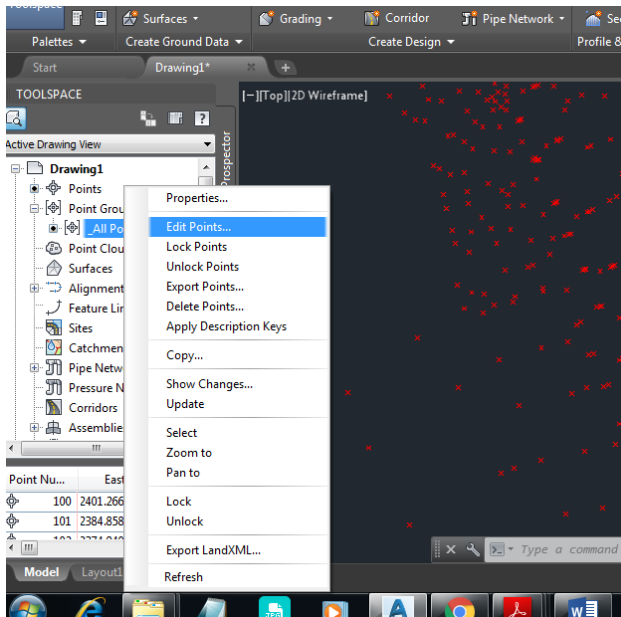
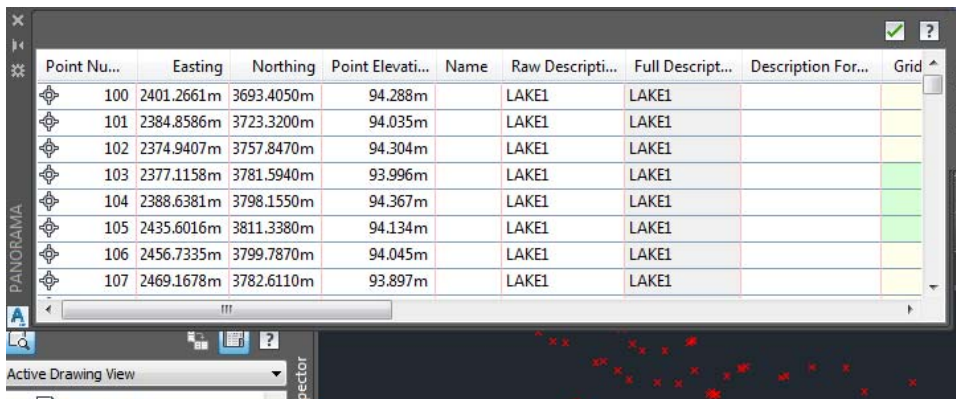
To show your inserted point, write ZE in the command line then press enter. This will show your points on screen as shown below.



3.1 Editing point presentation

3.1.1 Editing point information

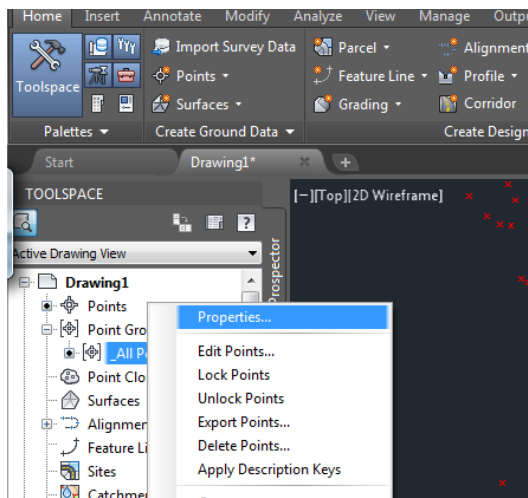
You can edit the points information such as coordinates, description.... etc. This can be done by right clicking on point group then select edit point. A new window will appear enabling you to edit the related information as shown in figure below.

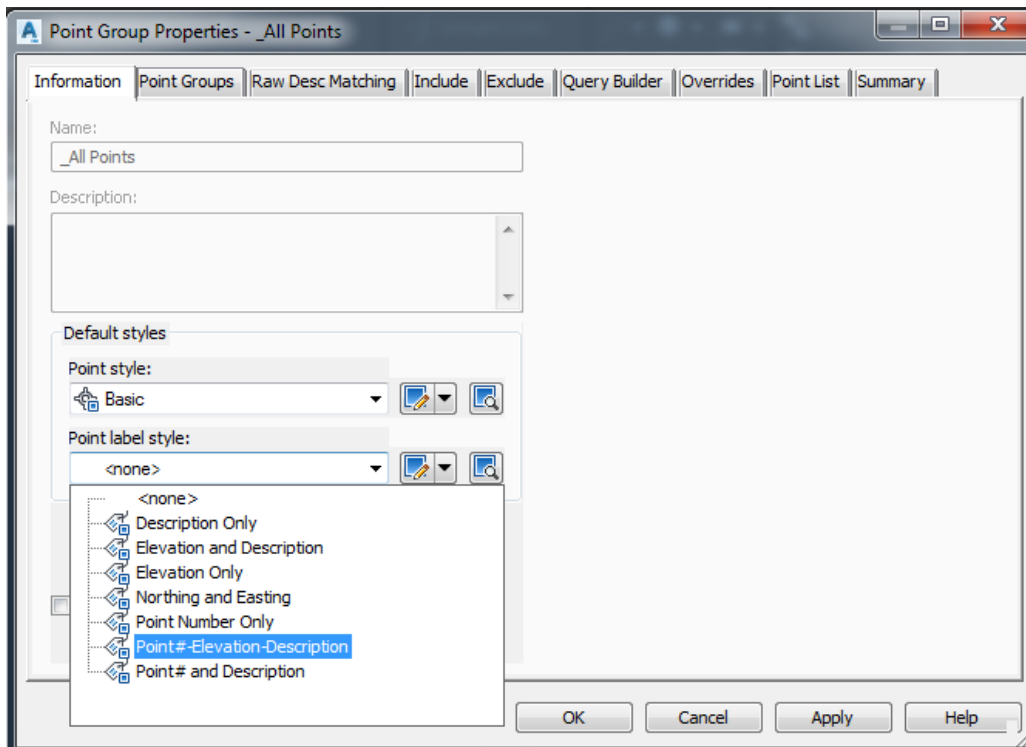
Point Nu...	Easting	Northing	Point Elevati...	Name	Raw Descripti...	Full Descript...	Description For...	Grid
100	2401.2661m	3693.4050m	94.288m		LAKE1	LAKE1		
101	2384.8586m	3723.3200m	94.035m		LAKE1	LAKE1		
102	2374.9407m	3757.8470m	94.304m		LAKE1	LAKE1		
103	2377.1158m	3781.5940m	93.996m		LAKE1	LAKE1		
104	2388.6381m	3798.1550m	94.367m		LAKE1	LAKE1		
105	2435.6016m	3811.3380m	94.134m		LAKE1	LAKE1		
106	2456.7335m	3799.7870m	94.045m		LAKE1	LAKE1		
107	2469.1678m	3782.6110m	93.897m		LAKE1	LAKE1		

3.1.2 Editing point presentation style

Sometimes you need to show specific information with points such as their coordinates, descriptions or elevations. AutoCAD civil allow you to show any type of information y as a part of points presentation. This can be done by pressing right click on point group (or specific point group) then select properties as shown in figure below.

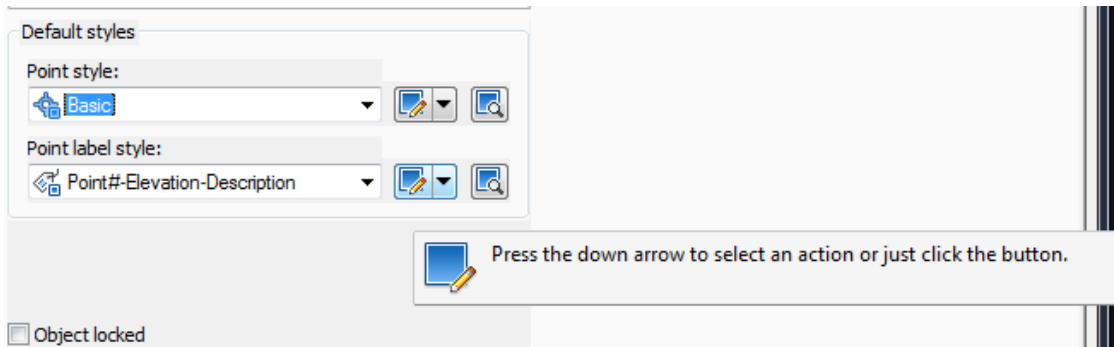


A new window will appear enabling you select the suitable point presentation style as shown in figure below. Then, press apply.....Ok. You will note the change in the point presentation on screen.

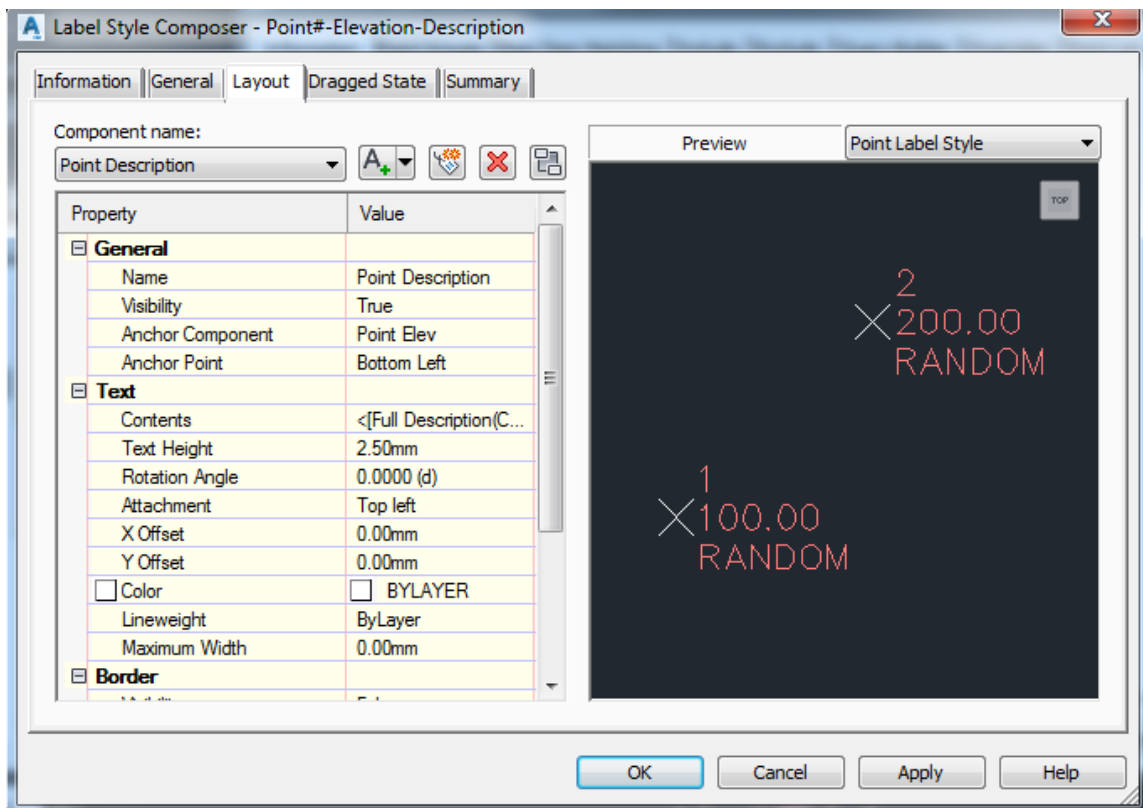


3.1.3 Editing point presentation height

This can be done by right clicking on point group-----choose properties -----then press the icon shown below.

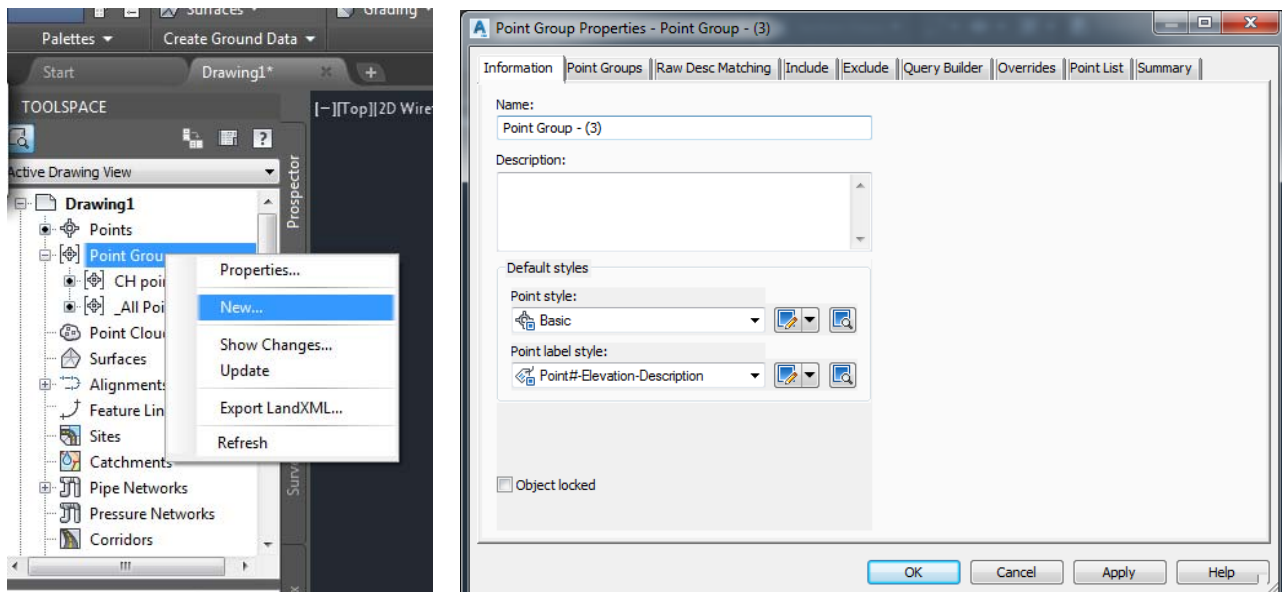


A new window will appear enabling you to edit text height for each presentation component.



3.1.4 Creating point groups

Right click on point group----- new----then specify name and required setting for your new group



3.1.5 Deleting points

You can use AutoCAD commands to add, move or delete points from your drawing.