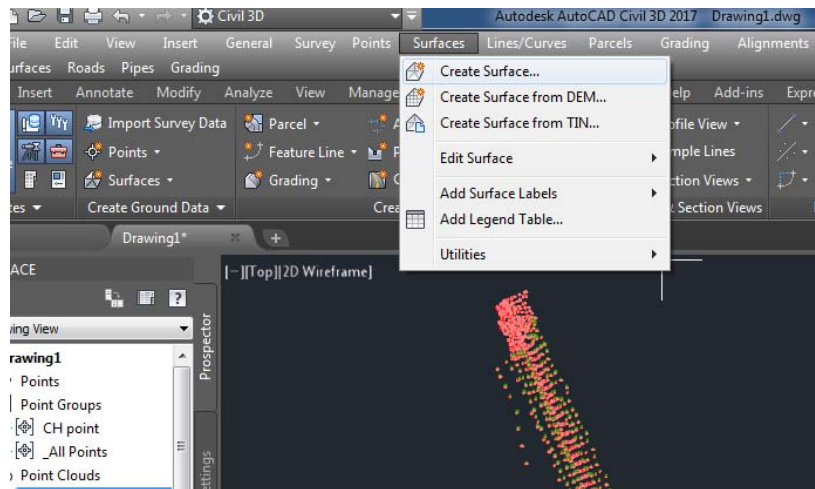


4 Surfaces

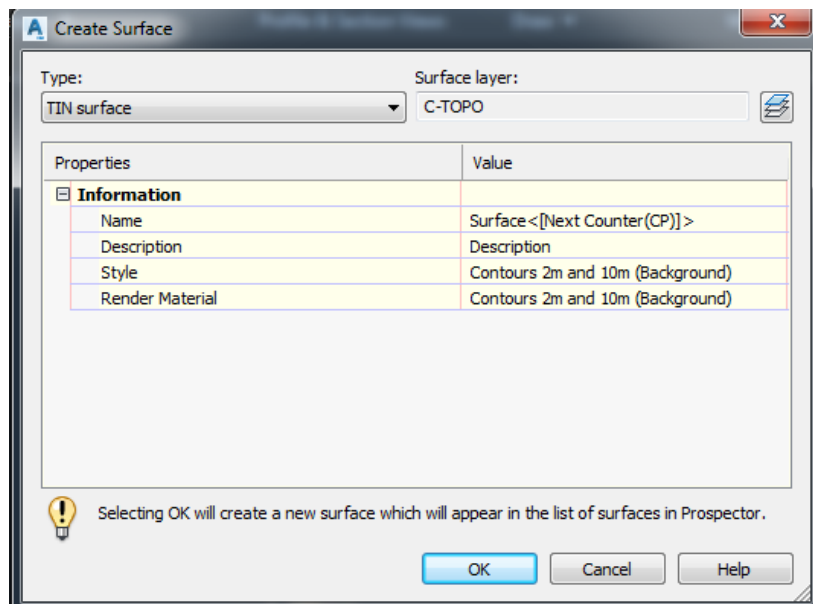
Surface in Civil 3D relates different surveying points in such way that each internal point with the surface can be found by the software.

4.1 Creating surface in Civil 3D

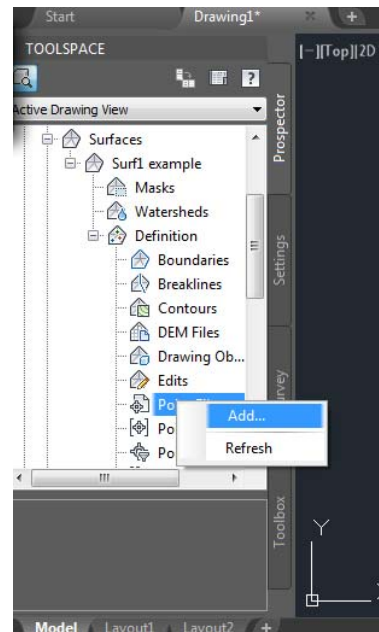
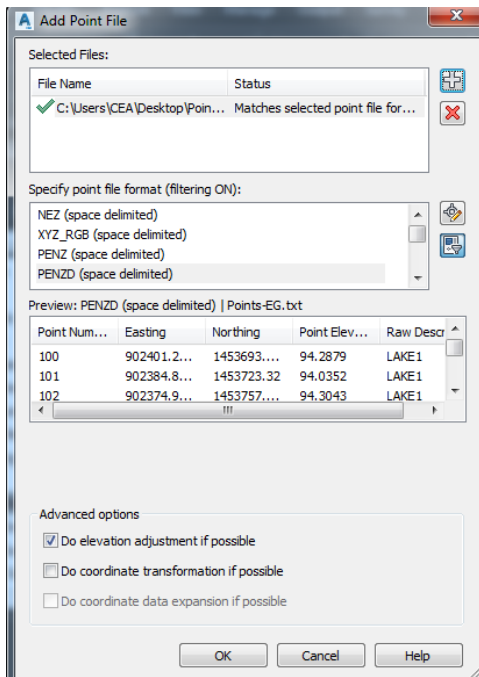
From menu bar choose surface---new surface as shown in figure.



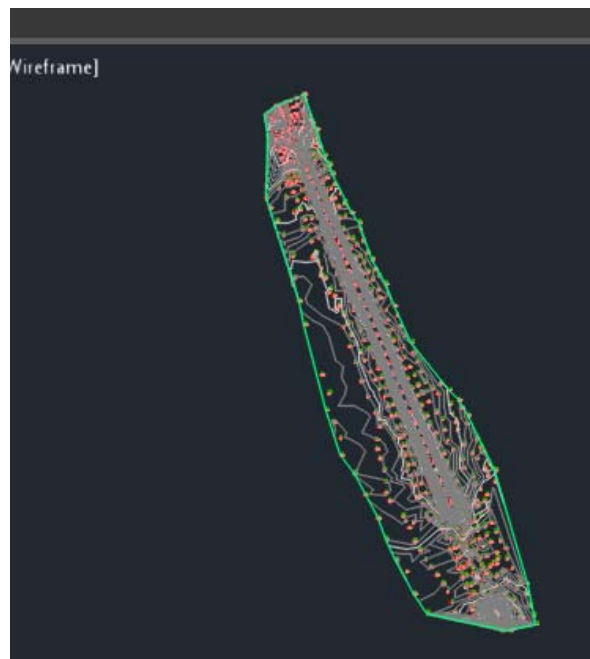
A new window will appear allow you to select a proper name and presentation style as shown in figure.



To add the point file to the surface choose the plus sign located before the surface name then expand the option then right click on points file (under point definition) as shown in figure. Then a new window will appear as shown below as discussed before.



After file definition, the contour map will appear as shown in the figure



4.2 Editing surfaces

4.2.1 Annotating contour lines

To add labels to the contours of the surface you should first select the current surface. This will change ribbons to the types related to surfaces. Click on Add Label ribbon and then select *Contour Multiple*. Finally, draw a line across the contours you want to add labels to them

