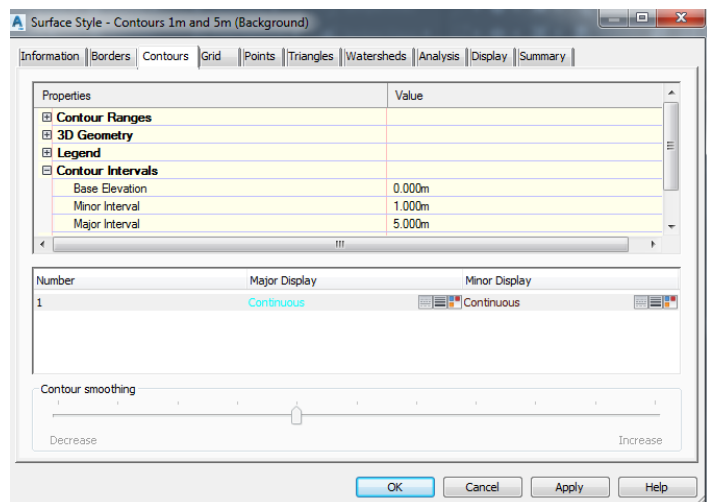
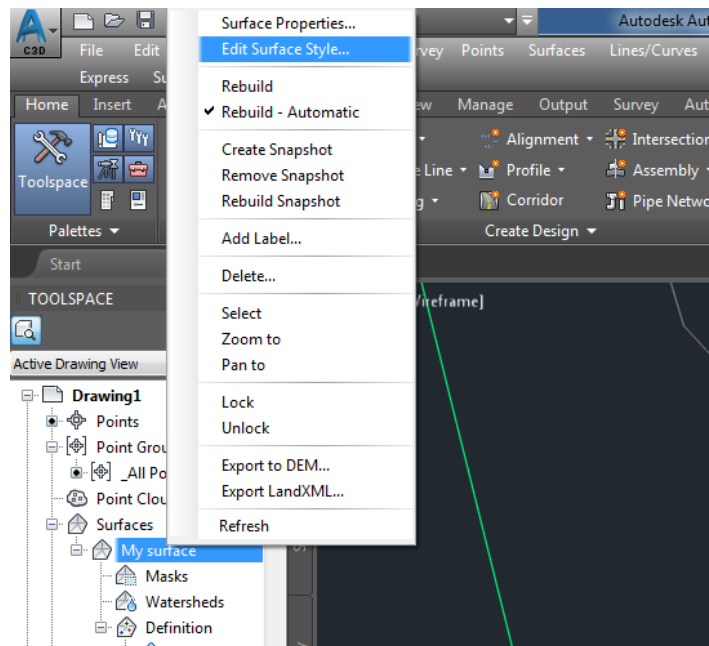


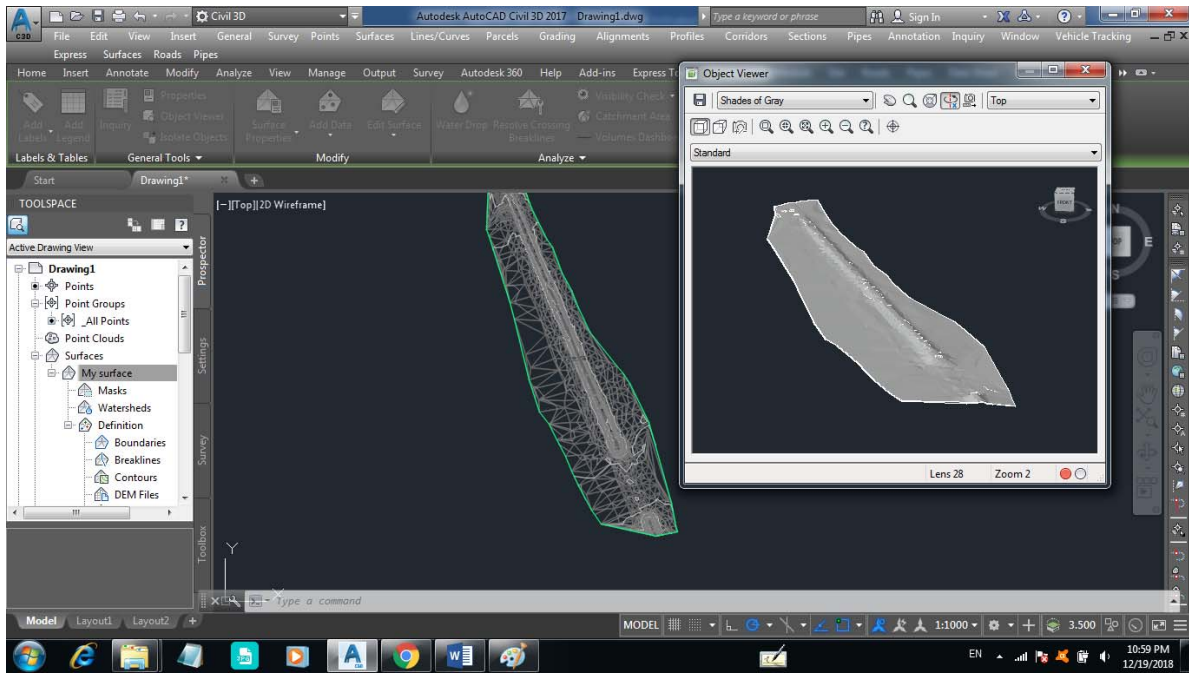
4.2.2 Changing contour intervals

To change the interval of the surface contours, simply right click on your surface name and select *Edit surface style*. Then, select *contour tab* and do the necessary modifications to the contour intervals (minor and major)



4.2.3 Changing surface presentation style and 3D presentation

Sometimes we need to present a 3-dimensional view for our surface. In this case, press right click on the surface name and select *surface properties*. A new window will appear enabling you to select another presentation style. From different styles select *countours and tringles*. Then, the surface appearance will change according to your selection. Press a click on the surface then choose object viewer from the related ribbons as shown in figure below.



5 Geometric design basics related to AutoCAD Civil 3D

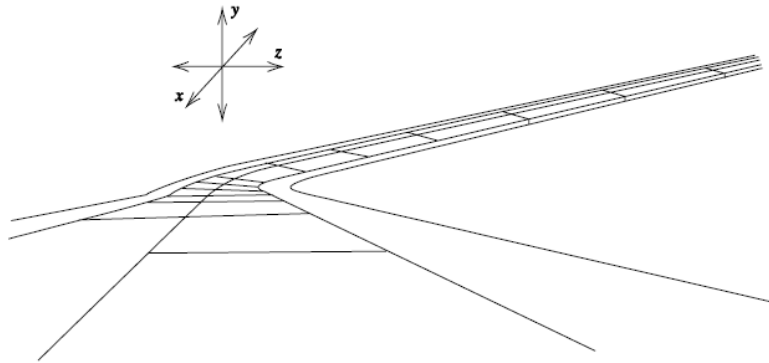


Figure 2.6: Three-dimensional view of highway alignment.

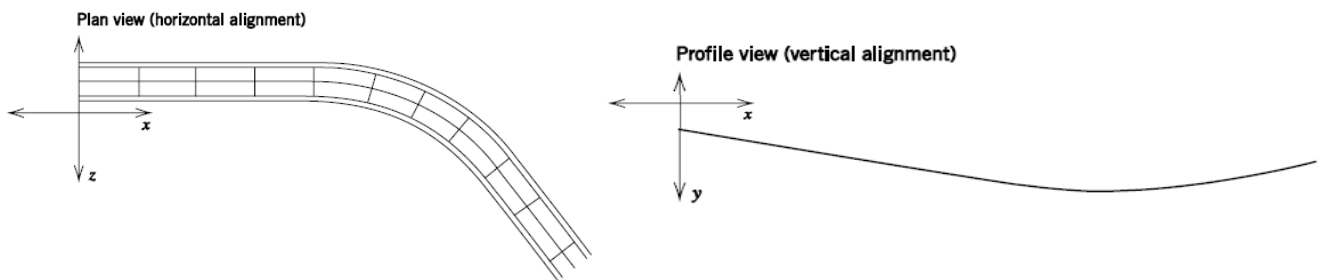


Figure 2.7: Simplified highway alignment: a. horizontal alignment and b. vertical alignment.