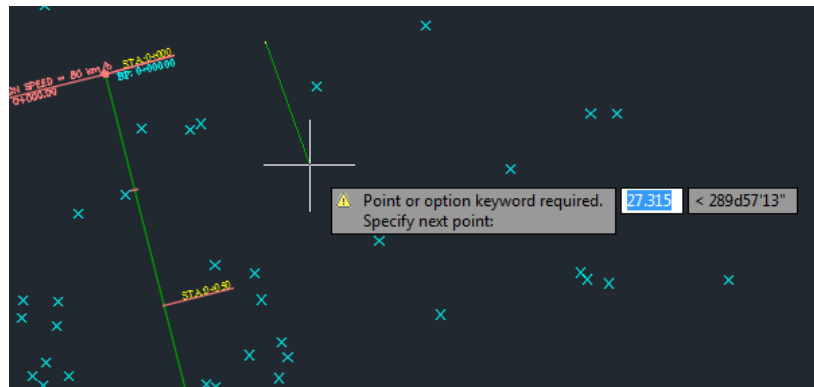
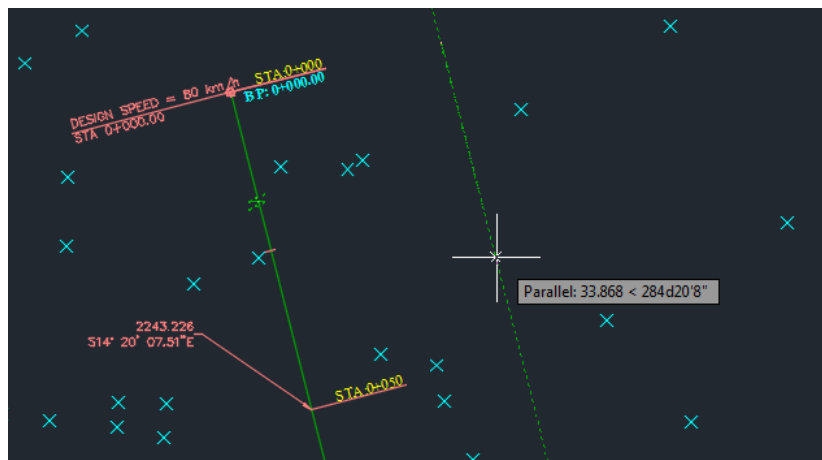


5.4 Drawing alignment for specific length and angle

Alignment can be drawn precisely based on specified PI points or based on lengths and directions. This can be done by writing the first point in the command line (or roughly clicking on the working area on screen). Then, either entering length of the straight part and < and an angle or entering a point coordinates. The first one can be written also on the spaces shown on screen as illustrated in the figure below

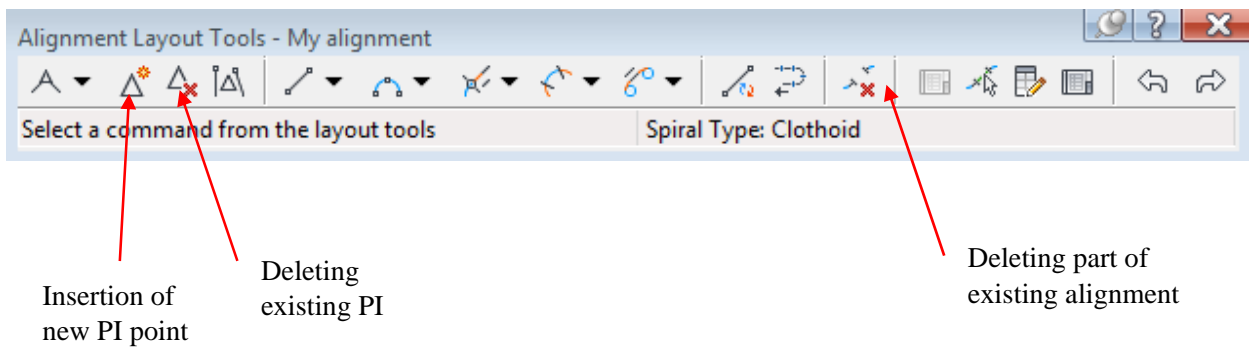


Note that there is a difference between the angle defined by the software and the bearing definition as shown in the figure below



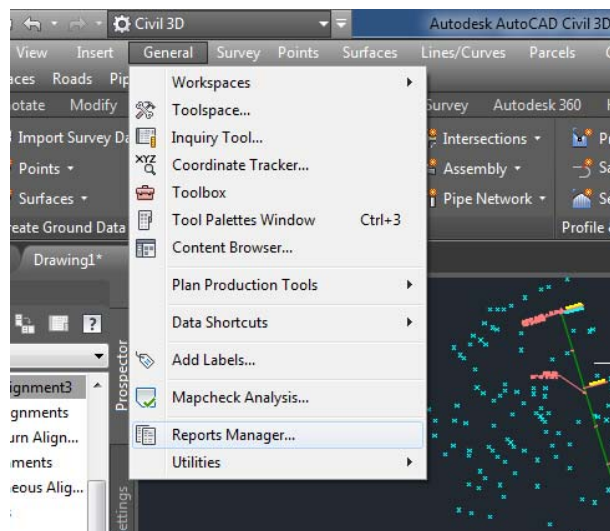
5.5 Editing PI points (addition, deleting)

Sometimes, it is necessary to change an alignment to avoid an obstacle for example. This may necessitate to delete an existing PI point or even adding new PI point. This can be done by selecting the alignment then choose geometry editor from the ribbons tools. The alignment layout tool will appear which will permit you to select one of the tools as shown in the next figure.



5.6 Design reports

To generate design report which consists design parameters and other information that used to set out the alignment, choose report manager from general menu.



A new set of reporting option will appear under Toolspace. From these option you can generate the report that you are interested in then right click and choose Execute. This will generate a report in any extension you select.

