



جامعة الانبار  
كلية علوم الحاسوب وتكنولوجيا المعلومات  
قسم أنظمة شبكات الحاسوب

برمجة صفحات الويب PHP  
المرحلة الثالثة  
الفصل الدراسي الاول

مدرس المادة  
م.د. سميه عبدالله حمد

## *Web Programming Lectures (PHP)*

### **Lectures:**

١. lec١: PHP Fundamentals (اساسيات برمجة صفحات الانترنت)
٢. lec٢: PHP Data Types (أنواع البيانات)
٣. lec٣: PHP Arrays (المصفوفات)
٤. lec٤: PHP Logic Control Structures (عبارات السيطرة)
٥. lec٥: PHP Loops (عبارات التكرار)
٦. lec٦: PHP Strings PHP String Functions (السلاسل ودوالها)
٧. lec٧: PHP Function (الدوال)
٨. lec٨: PHP Date() & Time Function (دوال الوقت والتاريخ)
٩. lec٩: Regular Expressions (التعابير المنتظمة)
١٠. lec١٠: PHP File Handling & Functions (دوال وتحميل الملفات)
١١. lec١١: PHP Session & PHP Cookies (الجلسات وملفات تعريف الارتباط)
١٢. lec١٢: How to Send Email using PHP mail (كيفية ارسال الايميل)

## **PHP Logic**

### **1- PHP Control Structures: If else, Switch Case**

#### **What is a control structure?**

Code execution can be grouped into categories as shown below

- **Sequential** – this one involves executing all the codes in the order in which they have been written.
- **Decision** – this one involves making a choice given a number of options. The code executed depends on the value of the condition.

A control structure is a block of code that decides the execution path of a program depending on the value of the set condition.

Let's now look at some of the control structures that PHP supports.

#### **PHP IF Else**

If... then... else is the **simplest control structure**. It evaluates the conditions using Boolean logic

#### **When to use if... then... else**

- You have a block of code that should be executed only if a certain condition is true
- You have two options, and you have to select one.
- If... then... else if... is used when you have to select more than two options and you have to select one or more

**Syntax** The syntax for if... then... else is;

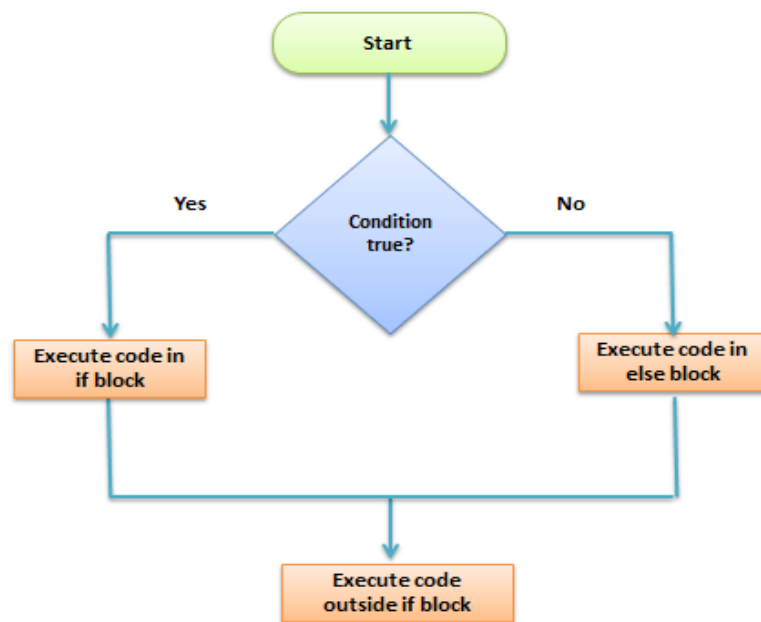
```
<?php
if (condition is true)
{
    block one
else
    block two
}?>
```

## Web Programming Lectures (PHP)

HERE,

- “**if (condition is true)**” is the control structure
- “**block one**” is the code to be executed if the condition is true
- {...**else**...} is the fallback if the condition is false
- “**block two**” is the block of code executed if the condition is false

**How it works** The flow chart shown below illustrates how the if then... else control structure works



**Let's see this in action** The code below uses “if... then... else” to determine the larger value between two numbers.

```
<?php
$first_number = 7;
$second_number = 21;
if ($first_number > $second_number){
    echo "$first_number is greater than $second_number";
}
Else
{
    echo "$second_number is greater than $first_number";
}??>
```

### **Output:**

21 is greater than 7

### **PHP Switch Case**

**Switch... case** is similar to the **if then... else** control structure.

It only **executes** a single block of code depending on the **value** of the condition.

If no condition has been met then the default block of code is executed.

It has the following basic syntax.

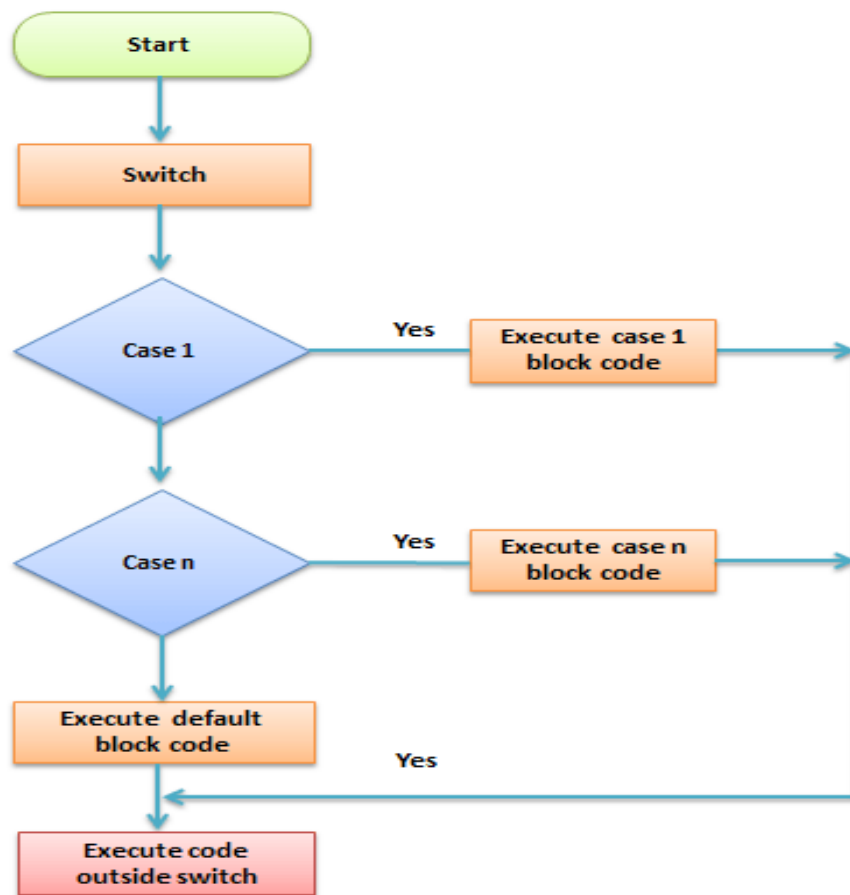
```
<?php
switch(condition){
case value:
    //block of code to be executed
    break;
case value2:
    //block of code to be executed
    break;
default:
    //default block code
    break;
}
?>
```

### **HERE,**

- “**switch(...){...}**” is the control structure block code
- “**case value: case...**” are the blocks of code to be executed depending on the value of the condition
- “**default:**” is the block of code to be executed when no value matches with the condition

### **How it works**

The flow chart shown below illustrates how the switch control structure works



### **Practical example**

The code below uses the switch control structure to display a message depending on the day of the week.

```
<?php
$today = "wednesday";
switch($today){
case "sunday":
    echo "pray for us sinners.";
    break;
case "wednesday":
    echo "ladies night, take her out for dinner";
    break;
case "saturday":
```

## *Web Programming Lectures (PHP)*

```
        echo "take care as you go out tonight.";
        break;
default:
        echo "have a nice day at work";
        break;
}
?>
```

### **Output:**

ladies night, take her out for dinner

### **Summary**

- Control structures are used to control the execution of the program
- The if then... else is when you have more than route block of code to execute depending on the value of the condition
- Switch... case is used to when you have a number of block codes, and you only have to execute one of them depending on the value of the set case.