

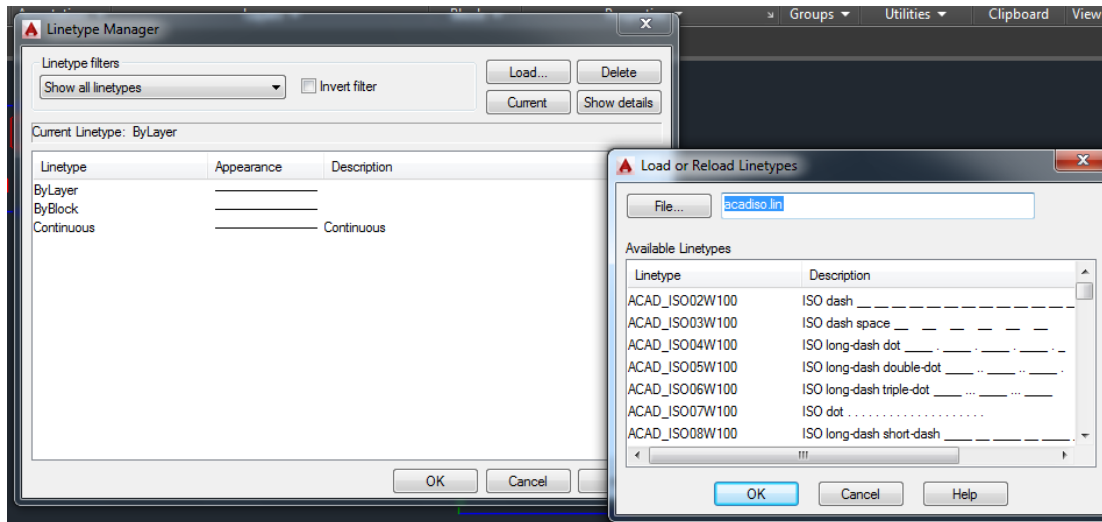


2- *tool bar: format* ⇨ *line*

3- *layer properties manager:*



type



c- Setting Line Weights

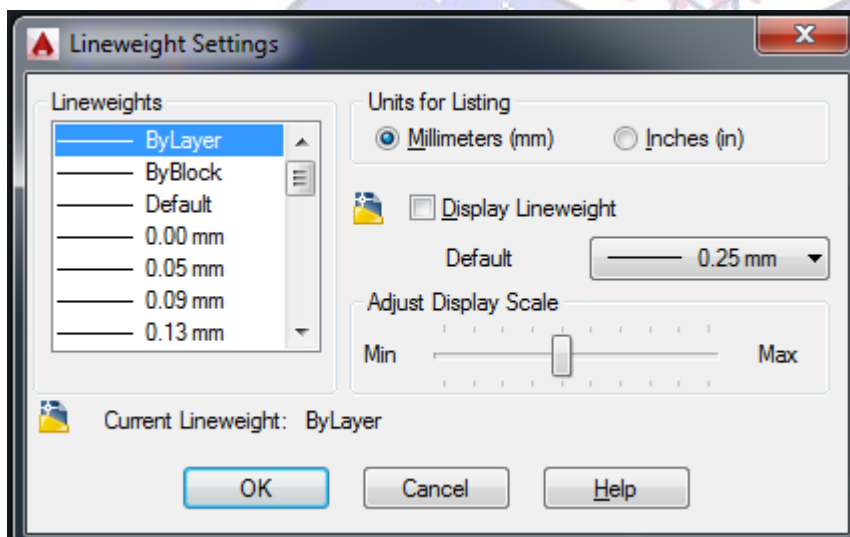
Line weights are important in technical drawing. For example, object lines should be thicker so they stand out more than dimensions. Normally, object lines are thick, hidden lines and text are of medium thickness, and center lines, dimensions, and hatch lines are thin.

1- *Command line Window: Lweight or lw*

2- *Tool Bar: format* ⇨ *line*

weight

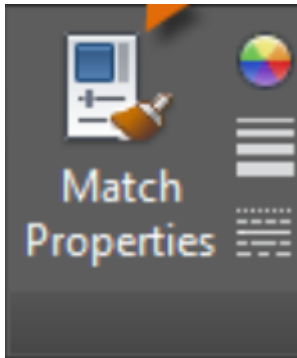
3- *layer properties manager*





d- Match the Properties of Objects

For a fast way to copy the properties of a selected object to other objects, use the Match Properties tool, or enter **MATCHPROP** or **MA** in the Command window.



The Mouse

Most people use a mouse as their pointing device, but other devices have equivalent controls.

